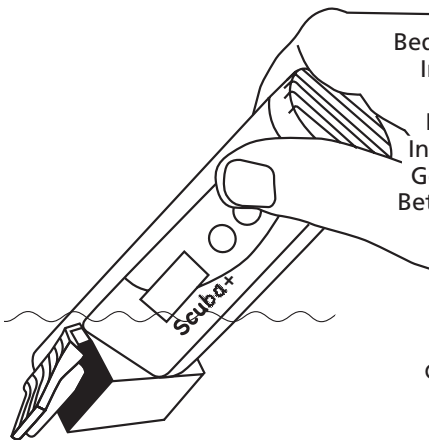


Scuba+



- Bedienungsanleitung **DE**
- Instruction Manual **GB**
- Mode d'emploi **FR**
- Istruzioni per l'uso **IT**
- Instrucciones de uso **ES**
- Gebruiksaanwijzing **NL**
- Betjeningsvejledning **DK**
- Bruksanvisning **SE**
- Bruksanvisning **NO**
- Käyttöohje **FI**

freies Chlor/ free Chlorine
Gesamtchlor/ total Chlorine

Brom/ Bromine
pH
Cyanursäure/ Cyanuric Acid
Alkalität/ Alkalinity

• Operation

- 1 Switch the unit on using the ON/OFF key. The display shows "CL F".
- 2 Select the test required using the MODE key: CLF (free Chlorine) → CLt (total Chlorine) → Br → PH → CYS → tA → CLF ... (Scroll). The display shows the desired method.
- 3 Open the grey lid on the top of the sample chamber.
- 4 Swirl the instrument several times under the water surface allowing to fill the sample chamber completely. Take the instrument out of the water and close the grey lid. Hold the lid firmly down.
- 5 Press the ZERO/TEST key. The method symbol flashes for approx. 8 seconds. The display shows "0.0.0".
- 6 Open the grey lid and add the appropriate tablet:

<u>Method</u>	<u>appropriate tablet</u>
---------------	---------------------------

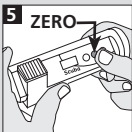
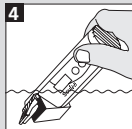
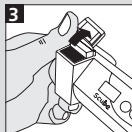
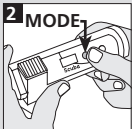
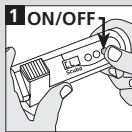
Free chlorine	DPD free
Total chlorine	DPD total
pH value	pH 6.5 - 8.4
Bromine	DPD free
Cyanuric acid	Stabilizer
Alkalinity	Alkalinity

- 7 Close the lid and swirl the instrument gently for approx. 30 seconds (Alkalinity 1 min) holding the lid firmly down.
- 8 Afterwards keep the instrument steady and wait for 30 seconds when testing CLF/pH/CYS and 2 minutes when testing CLt/tA.
- 9 Press the ZERO/TEST key. The method symbol flashes for approx. 6 seconds. The result appears in the display. Rinse the sample chamber and lid area thoroughly after each test.

It is not possible to repeat the reading because the measurement value is correctly displayed only during the waiting period stated above.

New zero calibration

Press the MODE key repeatedly until the desired method symbol appears in the display again.



• Calculation

Combined Chlorine = Total Chlorine - Free Chlorine

Technical Data

Free chlorine: 0.05 - 6.0 mg/l Cl_2

Total chlorine: 0.05 - 6.0 mg/l Cl_2

(Accuracy Chlor: 0-1 mg/l ± 0.2 ; 1-2 mg/l ± 0.3 ; 2-3 mg/l ± 0.4 ; 3-6 mg/l ± 0.5)

Bromine: 0.1 - 13.5 mg/l Br

(Accuracy: 0-2 mg/l ± 0.5 ; 2-4 mg/l ± 0.7 ; 4-7 mg/l ± 0.9 ; 7-13 mg/l ± 1.2 mg/l)

pH value: 6.5 - 8.4 pH (Accuracy ± 0.2 pH)

Cyanuric Acid: 1 - 80 mg/l Cys (Accuracy ± 15 mg/l)

Alkalinity: 10 - 500 mg/l CaCO_3 (Accuracy ± 50 mg/l)

Light source: LED, filter ($\lambda = 528$ nm)

Battery: 9 V-block battery (Life 600 tests).

Auto-OFF: Automatic switch off 5 minutes after last keypress

Ambient temperature: 0–40°C, relative humidity: 30–90%,

conditions: non-condensing

CE: DIN EN 55 022, 61 000-4-2, 61 000-4-8,

50 082-2, 50 081-1, DIN V ENV 50 140, 50 204

• Maintenance

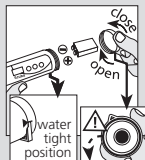
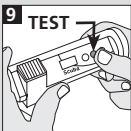
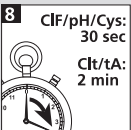
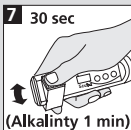
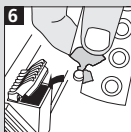
1. Keep the instrument in a clean condition.
2. No solvent or abrasive materials should be used to clean the instrument.
3. Let the instrument dry when not used, store under ambient environmental conditions.
4. Remove battery if instrument is longer unused.

• Trouble shooting

1. Use only tablets in white foil.
2. Touching the tablets can cause contamination.
3. Close the grey lid on top of the sample chamber before zeroing/reading.
4. Always ensure that the sample and the lid are thoroughly rinsed when changing from one test to the other.

• Fitting the battery (9 volts, 6LR61)

BAT Change the batteries with this display indication. Check position of the black O-Ring when opening/ closing the battery chamber lid!



● Bediener-Hinweise

H_i Messwert zu groß

L_o Messwert zu klein

E 01 / E 03 LED defekt oder Messschacht verschmutzt

E 20 Messschachtdeckel nicht richtig verschlossen,
LED zu hell

E 70 - E 80 Fabrikationskalibrierung nicht in Ordnung /
gelöscht

● User notes

H_i Overrange

L_o Underrange

E 01 / E 03 Cell chamber lid not closed, LED too bright

E 20 LED faulty or cell chamber dirty

E 70 - E 80 Factory calibration not OK / deleted

● Instructions pour l'utilisateur

H_i Valeur de mesure trop élevéeUnderrange

L_o Valeur de mesure trop basse

E 01 / E 03 DEL hors service ou chambre de mesure
encrassée

E 20 Le couvercle de la chambre de mesure n'est
pas bien fermé DEL trop claire

E 70 - E 80 Calibrage d'usine incorrect / effacé.

